

Just What You Need Medical Supplies, Inc.'s (JWYN)

professional team shall collaborate with physicians, hospitals, assisted living, nursing homes and caregivers, to ensure timely follow-up of patient's /customer's delivery of Durable Medical Equipment and/or Medical supplies.

- We are dedicated to enhance and improve the quality of life for the patient/customer by providing high quality equipment/-supplies.

- Improved patient's understanding of the use of the equipment/ supplies, prescribed by their physician.

- Caring friendly professional customer service to answer all your concerns and resolve any and all issues.

JWYN's mission is to enhance each patient's/customer's lifestyle, as it relates to their durable medical equipment/supplies needs, by providing the highest level of compassionate, friendly, professional services, provided by our experienced world class customer service team.

JWYN accepts all Durable Medical Equipment (DME) which must be supported with the required signed documents as requested by your medical insurance.

Medicare - Certificate of Medical Necessity (CMN FORM) reflecting the equipment/supplies requested by your physician.

DC Medicaid - Signed 719A form reflecting the equipment/supplies requested by your physician.

Amerigroup - RX and physician's orders/progress notes.

Maryland Medicaid - RX and signed Maryland State Department of Health and Mental Hygiene Request Form.

CareFirst Blue Cross - RX and physician's orders/progress notes.



*Connect With Your Healthcare Needs
A Whole New Way*

**Durable Medical Equipment
Incontinence Supplies**

**8725 Greenbelt Road, Suite 203,
Greenbelt, MD 20770**
OFFICE : (240) 787 - 2445 | FAX: (1443) 973 - 1012
Hours of Operation: 9AM - 5PM

Most Insurances Accepted



OUR LEGAL DUTY

We are required by applicable federal and state law to maintain the privacy of your health information. You may request a copy of notice at any time.

For more information about our policy practices, or Healthcare Services please contact us at:

8725 Greenbelt Road, Suite 203,
Greenbelt, MD 20770

OFFICE : (240) 787 - 2445 | FAX: (1443) 973 - 1012

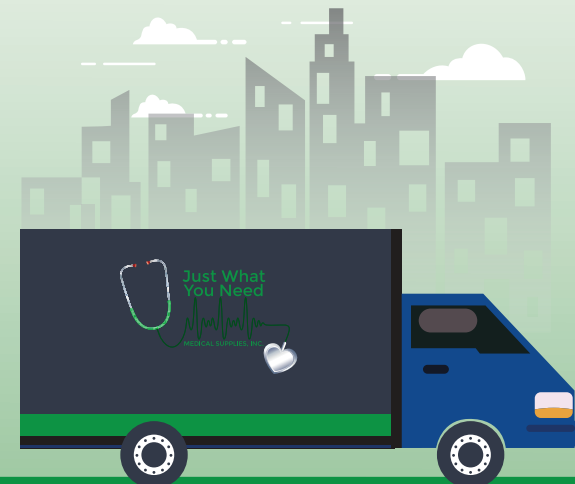


Accredited by The Compliance Team
License (RSA - R4605R) by the State of Maryland

DURABLE MEDICAL EQUIPMENT (DME)

Commodes/Urinal/Bedpan
Hot & Cold Applications
Crutches
Rollators
W/C Seating/Cushion
Ostomy Supplies
Urological Supplies
Nebulizer Equip & Supplies
Shower Chairs
TENS Unit

Glucometer & Supplies
Canes
Walkers
Wheel Chair & Accessories
OTS Orthotics
Trach Supplies
Nutritional Supplements
Surgical Supplies
Incontinence Supplies
Breast Pumps



FREE DELIVERY